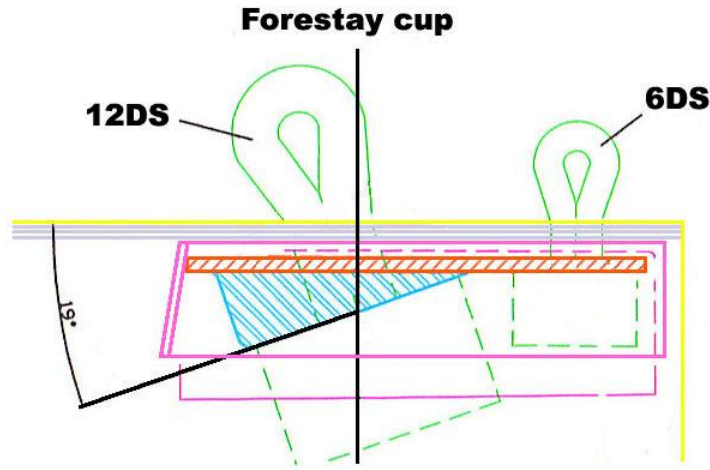






# Equiplite™ Chain Plates V1 | D1 Head stay | Runners - Backstay



Lightweight replacements for stainless steel chain plates... .

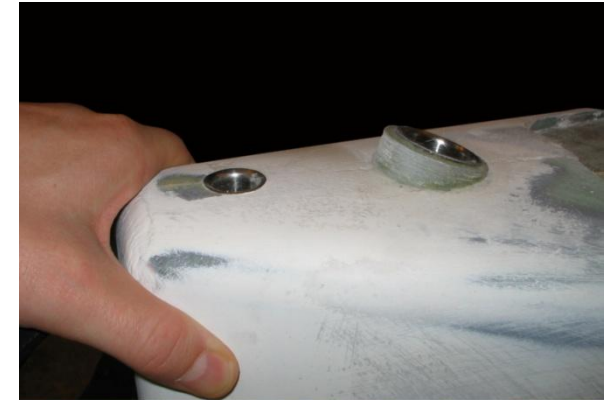
Equiplite™ Chain Plates are similar in design to Equiplite™ deck loops. Giving the lightest, non corrosive chain plates in the world (at least 80% lighter for the same load compared to traditional stainless fittings assemblies).

## High-strength material- Impact resistant and fully waterproof

The soft deck loops are high-strength DSK Ultra 75, constructed using non corrosive materials technology. And have unmatched impact and wear resistance.

## Stands up to salt, sun and long-term wear

DSK 75 ULTRA with UV resistant cover and coating give extra protection for Chafe and if maintained will give long life.



Construction example.

For the best results, head stay or shroud should be approx in line with load and turnbuckle assy. Should connect to loop via spacer disc.

Construction on the left is the chain plate of the V1 | D1. Project: **V1 Lutra 30**

Note: Sufficient structural strength should be built in for required MWL.

Note: Matching parts should be rounded, smooth, and with no sharp edges or burrs.

Dyneema loops are coated with an UV coating, recoat when worn for long life. It is recommended that loops should be replaced when worn.

**All prices are retail prices in Euro.**

**All data approx and subject to change without notice.**

**Other sizes available on special order.**

**Unspecified dims. mm.  
Break load approx. 2 x MWL.**

Please specify exact deck thickness with order.

Single loop	Loop $\varnothing$	Tube $\varnothing$	H $\varnothing$	Height (mm)	Throat (mm)	MWL (kg)	Weight (g)
12-CP	19	29	52	35	50	10,000	110
10-CP	15	29	50	35	45	8,000	99
8-CP	12	22,5	42	33	35	6,000	60
7-CP	10	17	39	25	30	4,000	50
6-CP	8	17	39	25	25	2,600	40
4-CP	7	13,5	39	25	20	1,800	35

**Note:** all data and weight are approx. and will vary according to deck and loop size etc.

All deck loops must be backed up with carbon reinforcing plates or similar top and bottom commensurate with the designed loading. Deck loop housings are for packaging and not designed for any significant load without sufficient deck reinforcing.