





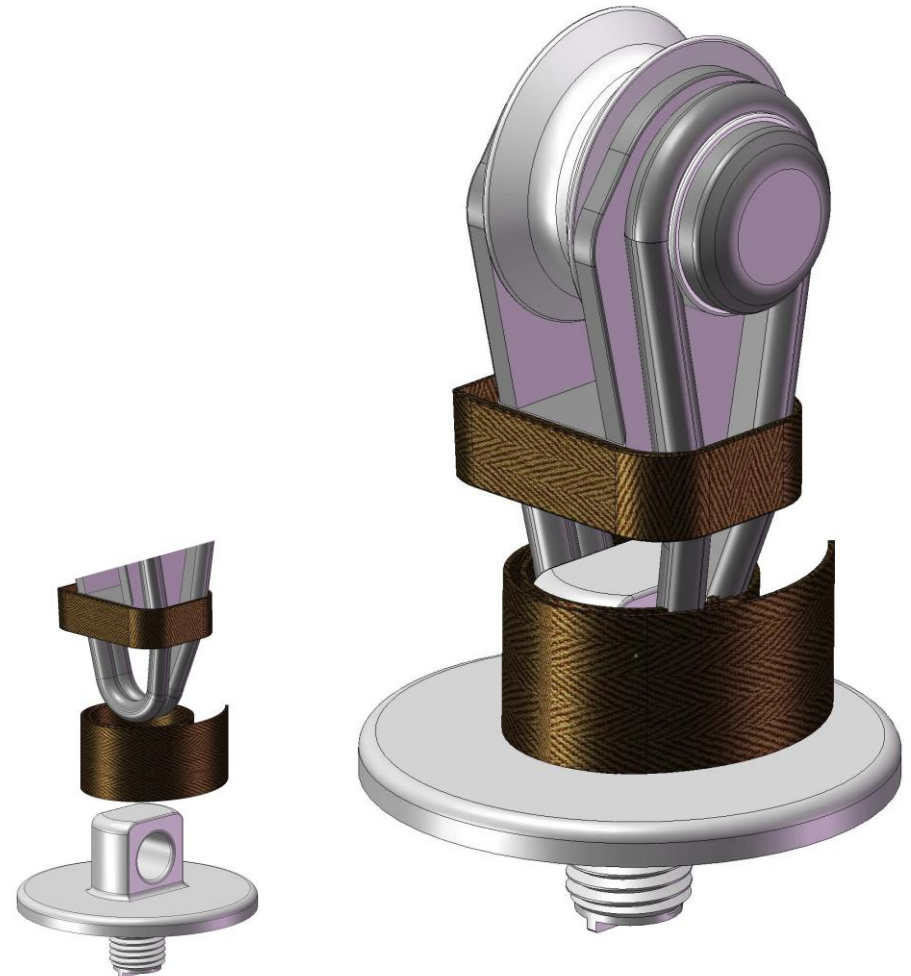
### Stand Up System™

The stand up system is especially designed for Equiplite™ mast base blocks, and really interesting for the main sheet blocks | runner blocks | lead runner blocks | spinnaker blocks | tack line blocks.

Equiplite™ up stand™ system can be used on either stainless or soft pad eyes.

## Equiplite™ Mast base Blocks

Use Equiplite™ Snatch Blocks in combination with soft deck loops to create an Equiplite mast base block system, that will achieve a weight saving of at least 85%. More information on the deck loops see deck loop data sheet.



Note: Matching parts should be rounded, smooth, and with no sharp edges or burrs.

Dyneema loops are coated with an UV coating, recoat when worn for long life. It is recommended that loops should be replaced when worn.

**All prices are retail prices in Euro.**

**All data approx and subject to change without notice.**

**Other sizes available on special order.**

**Unspecified dims. mm.  
Break load approx. 2 x MWL.**

**MB: Mast base blocks**

**Other throats available**

Part	Sheave Ø	Max. Line (mm)	Throat (mm)	MWL (kg)	Weight (g)
35-95-12 MB-HL	95	26	45	15,000	1.275
25-78-10 MB-HL	78	25	43	9,000	694
20-65-8 MB-HL	65	20	33	7,000	469
16-46-6 MB-HL	47	16	23	4,000	182
14-40-5 MB-HL	40	13	18	3,000	107
12-30-4 MB-HL	30,5	11	15	2,300	69

**VHL: Very High-load**

Part	Sheave Ø	Max. Line (mm)	Throat (mm)	MWL (kg)	Weight (g)
35-95-12 MB-VHL	95	26	45	18,000	1.275
25-78-10 MB-VHL	78	25	43	13,000	694
20-65-8 MB-VHL	65	20	33	9,000	469
16-46-6 MB-VHL	47	16	23	5,000	182
14-40-5 MB-VHL	40	13	18	4,000	107
12-30-4 MB-VHL	30,5	11	15	2,800	69