







# Equiplite™ High-Load | Snatch Block SB | Halyard Block HB



**Equiplite™ Snatch Blocks** use DSK 75 ULTRA loops to take the loads directly through the centre of the sheave. This allows the blocks to be extremely light (75% less than competitive assemblies of the same load).

Compact, less windage, quick and easy to operate, compared to competitive blocks, of the same load. Even with cold & wet hands.

Now available in lowload, highload and VHL for unmatched performance value.

Snatch blocks are used on cruising and top competitive boats for:

- |                           |                          |
|---------------------------|--------------------------|
| <b>Barber haulers</b>     | <b>Tack line block.</b>  |
| <b>Mast base blocks</b>   | <b>Main sheet blocks</b> |
| <b>Jib clew block 2:1</b> | <b>Trim sheet blocks</b> |

And their flexibility make them particularly good for the most difficult use for:

- |                         |                          |
|-------------------------|--------------------------|
| <b>Main halyard 2:1</b> | <b>Genoa halyard 2:1</b> |
|-------------------------|--------------------------|

## High-strength material— low friction, impact resistant

The snatch blocks use moulded carbon composite side plates, with high-tensile Hardkote-anodized aluminium sheaves for high load types. The bearing utilise advanced high load low friction polymer bearing technology, giving unparalleled loaded bearing efficiency of at least 92% for HL and 94% for VHL... (with dry operation, without need for lubrication). Snatch blocks have unmatched impact and wear resistance.

## Reduced possible damage to the yacht, safe

Our compact loop system and clean protection reduces damage to the yacht. Safer: Extremely light weight reduces risk of injury when flogging.



Full offering with quick loop



Low load version

Note: Matching parts should be rounded, smooth, and with no sharp edges or burrs.

Dyneema loops are coated with an UV coating, recoat when worn for long life. It is recommended that loops should be replaced when worn.

LL (low load) | HL (high load) | VHL (very high load) [see next page](#)

**All prices are retail prices in Euro.**

**All data approx and subject to change without notice.**

**Other sizes available on special order.**

**Unspecified dims. mm.  
Break load approx. 2 x MWL.**

**Snatch blocks for halyard use or general use**

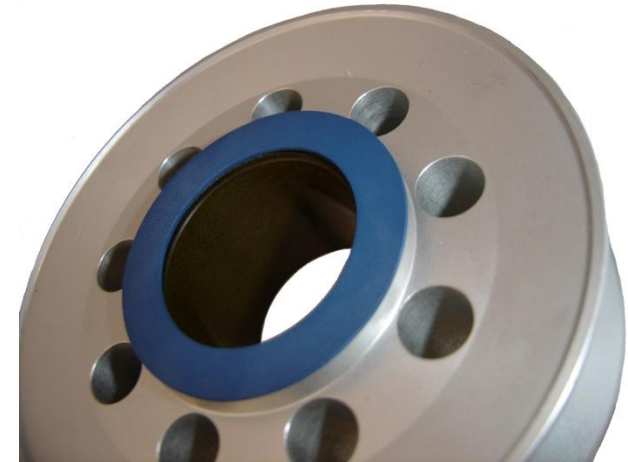
**Other throats available**

Part	Sheave Ø	Max. Line (mm)	Throat (mm)	MWL (kg)	Wt. (g)
50-150-18 HB/SB-HL	150	35	65	35,000	2,400
50-135-16 HB/SB-HL	135	35	60	26,000	2,100
50-125-14 HB/SB-HL	125	35	55	20,000	1,950
35-120-14 HB/SB-HL	120	32	47	20,000	1,600
50-120-12 HB/SB-HL	120	35	55	15,000	1,700
35-120-12 HB/SB-HL	120	32	47	15,000	1,527
35-95-12 HB/SB-HL	95	26	47	15,000	1,297
25-98-10 HB/SB-HL	98	25	45	9,000	936
25-78-10 HB/SB-HL	78	25	45	9,000	620
25-78-10 HB/SB-LL	78	25	45	5,000	450
20-75-8 HB/SB-HL	75	22	35	7,000	484
20-65-8 HB/SB-HL	65	20	35	7,000	463
20-65-8 HB/SB-LL	65	20	35	3,500	342
18-64-7 HB/SB-HL	64	16	30	6,000	388
18-64-6 HB/SB-HL	64	16	30	4,000	289
16-46-6 HB/SB-HL	47	16	27	4,000	176
16-46-6 HB/SB-LL	47	16	27	1,800	149
14-47-5 HB/SB-HL	47	13	22	3,000	145
14-40-5 HB/SB-HL	39	13	20	3,000	97
14-40-5 HB/SB-LL	39	13	20	1,600	89
12-30-4 HB/SB-HL	30,5	11	17	2,300	64
12-30-4 HB/SB-LL	30,5	11	17	1,000	59

HB = Halyard block SB = Snatch block

## VHL Very High-load Snatch Block

Equiplite™ VHL Snatch blocks are special designed for performance yachts, grand prix and mega yachts. For these VHL Blocks, we use very high load very low friction bearings resulting in 94% efficiency (dry operation).



All prices are retail prices in Euro.

All data approx and subject to change without notice.

Other sizes available on special order.

Unspecified dims. mm.  
Break Load approx. 2 x MWL.

### VHL Snatch Block | Custom

### Other throats available

Part	Sheave Ø	Max. Line (mm)	Throat (mm)	MWL (kg)	Wt.(g)
50-150-18 HB/SB-VHL	150	35	65	40,000	2,400
50-135-16 HB/SB-VHL	135	35	60	30,000	2,100
35-120-14 HB/SB-VHL	120	32	47	24,000	1,600
35-120-12 HB/SB-VHL	120	30	47	17,000	1,527
25-98-10 HB/SB-VHL	98	25	45	12,000	936
25-78-10 HB/SB-VHL	78	25	45	12,000	620
20-75-8 HB/SB-VHL	75	22	35	8,500	484
20-65-8 HB/SB-VHL	65	20	35	8,500	463
18-64-7 HB/SB-VHL	64	16	30	7,000	388
18-64-6 HB/SB-VHL	64	16	30	5,000	308
16-46-6 HB/SB-VHL	47	16	27	5,000	176
14-47-5 HB/SB-VHL	47	13	22	4,000	145
14-40-5 HB/SB-VHL	40	13	20	4,000	97
12-30-4 HB/SB-VHL	30,5	11	17	2,800	64

HB = Halyard block    SB = Snatch block