





Equiplite™

## Swiveling (S) | Quick Connectors

Weight at the mast top is one of the biggest drawbacks to yacht performance.

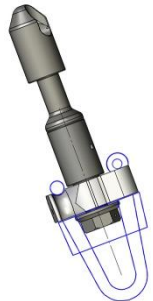
Equiplite™ Swivel Quick Connector use hi tensile alloy body with DSK 75 ULTRA loops to take the load together. They are designed for halyards, using a compact design with less windage, quick and easy to operate compared to competitive swivels, of the same load. Even with cold & wet hands. This allows the swivel quick connector to be much lighter (at least 80% for the same load compared to traditional stainless fittings assemblies of the same load).

### High-strength material— low friction, impact resistant

The swivel quick connectors use high-strength Hardkote – anodized high tensile aluminium body. With high load polymer bearing technology for easy rotation. They have unmatched impact and wear resistance.

### Reduced damage to the rig, safe and will not jam if overload.

Our compact swivel quick connector with velcro wrap protection reduces damage to the Rig. Safer: light weight reduces risk of injury when flogging, reduced damage to mast, spinnaker tracks, topsides etc. Will not jam even if overloaded, will operate close to break load. And will not fatigue and fail prematurely compared to stainless.



### Two in one system

The lock system can be build in to the swivel connector. Which makes the system as compact as possible, for MAX. luff length and sail performance.



Swivel quick connectors are used on cruising and top competitive boats for:

**Mast top halyards** | **Jib | Genoa | Staysail halyards**  
**Tack fittings** | **Genacker sheets**





Note: Matching parts should be rounded, smooth, and with no sharp edges or burrs.

Dyneema loops are coated with an UV coating, recoat when worn for long life. It is recommended that loops should be replaced when worn.

All prices are retail prices in Euro.

All data approx and subject to change without notice.

Other sizes available on special order.

Unspecified dims. mm.  
Break load approx. 2 x MWL.

Part   High load version	Line Ø (mm)	Throat (mm)	MWL (kg)	Wt. (g)
24-12 SHL	35	70	15,000	710
22-12 SHL	22	60	15,000	699
20-12 SHL	20	50	15,000	484
20-10 SHL	20	45	10,000	444
18-10 SHL	18	45	10,000	404
16-10 SHL	16	45	10,000	344
16-08 SHL	16	40	7,000	300
14-10 SHL	14	45	10,000	280
14-08 SHL	14	40	7,000	215
14-07 SHL	14	35	6,000	210
12-06 SHL	12	30	5,000	150
10-05 SHL	10	25	3,500	50
8-04 SHL	8	20	2,500	38
6-03 SHL	6	15	1,400	19